

LAVISTA
ASSOCIATES, INC.

Commercial Real Estate

OVER
50
YEARS
EST. 1972

FOR SALE



Lake Oconee Parkway at I-20 | Greensboro, GA 30642

14.16 ACRES
(\$250,000/AC)

Adjoins Home Depot

All Utilities Available

Zoned B2 - General Commercial

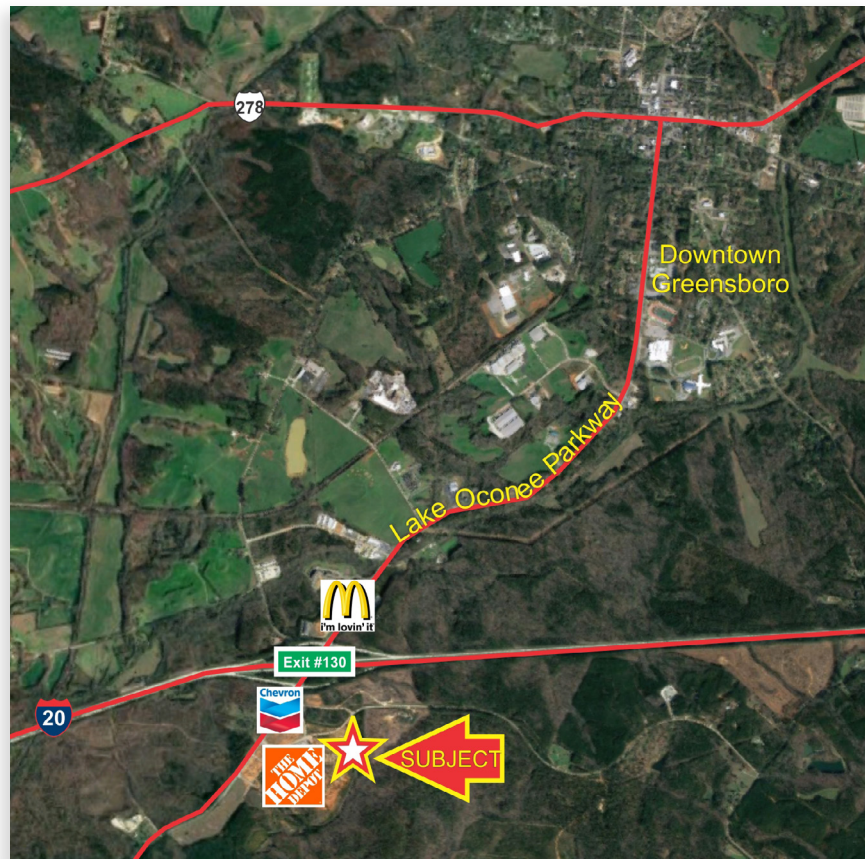
Over 700' Road Frontage

Graded Site

Water Retention in Place

Just Off Exit 130 on I-20

Excellent Proximity to Reynolds Plantation at
Lake Oconee & Downtown Greensboro



FOR MORE
INFORMATION
PLEASE CONTACT

HENRY WOOD
770.729.2844
hwood@lavista.com

LAVISTA.COM

3490 Piedmont Road, NE | Suite 1300 | Atlanta, Georgia 30305

LAVISTA
ASSOCIATES, INC.

Commercial Real Estate

OVER
50
YEARS
EST. 1972

FOR SALE

**LAKE
OCONEE**

GREENSBORO



**14.16
ACRES**

**Proposed 900 Student
Primary / Middle School**

**Proposed 2,000
Residential Home
Developments**

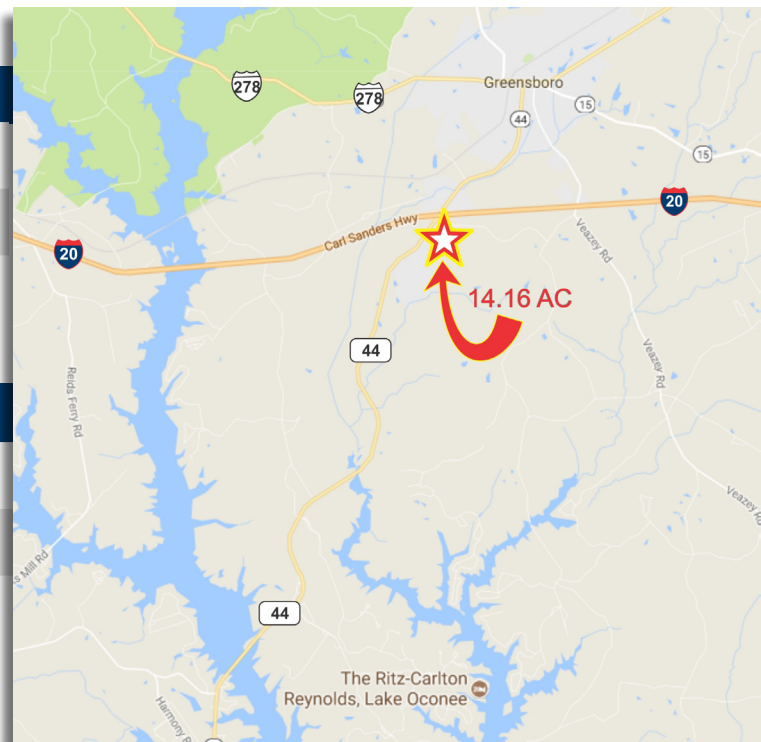
DEMOGRAPHICS

	3-mile	5-mile	7-mile
Population	3,643	9,700	10,903
Households	1,281	4,046	4,624
Average HH Income	\$54,385	\$122,061	\$136,787

TRAFFIC COUNTS

Meadow Crest Rd	5,998 VPD
Lake Oconee Pkwy, GA 44	15,386 VPD
I-20	17,280 VPD

Source: Placer.ai



FOR MORE
INFORMATION
PLEASE CONTACT

HENRY WOOD
770.729.2844
hwood@lavista.com

LAVISTA.COM

3490 Piedmont Road, NE | Suite 1300 | Atlanta, Georgia 30305