



Excellent Access to I-20

Great Labor Pool

**Close to Retail Amenities
(Restaurants, Shopping, and Hotels)**

Pro-Business Government

**Home to Many Manufacturing
and Distribution Companies:
SKC, General Mills, Bridgestone,
Pactiv, Nisshinbo, Old Castle
Glass, Valspar and C.R. Bard**

Hazelbrand Road NE | Covington, Georgia 30014

Covington Logistics Park is a 167 Acre master-planned park located 27 miles east of I-285 via I-20 in Covington, GA.

Covington Logistics Park is 1/2 mile from I-20 via Exit 93 (Hwy 142) providing excellent access for large distribution users.

Additionally, the Northern 67 acres are bordered by the CSX main rail line which provides the availability of rail service for manufacturers and distributors.

FOR MORE
INFORMATION
PLEASE CONTACT

BOBBY MAYSON
770.729.2817
bmayson@lavista.com

67 ACRE SITE

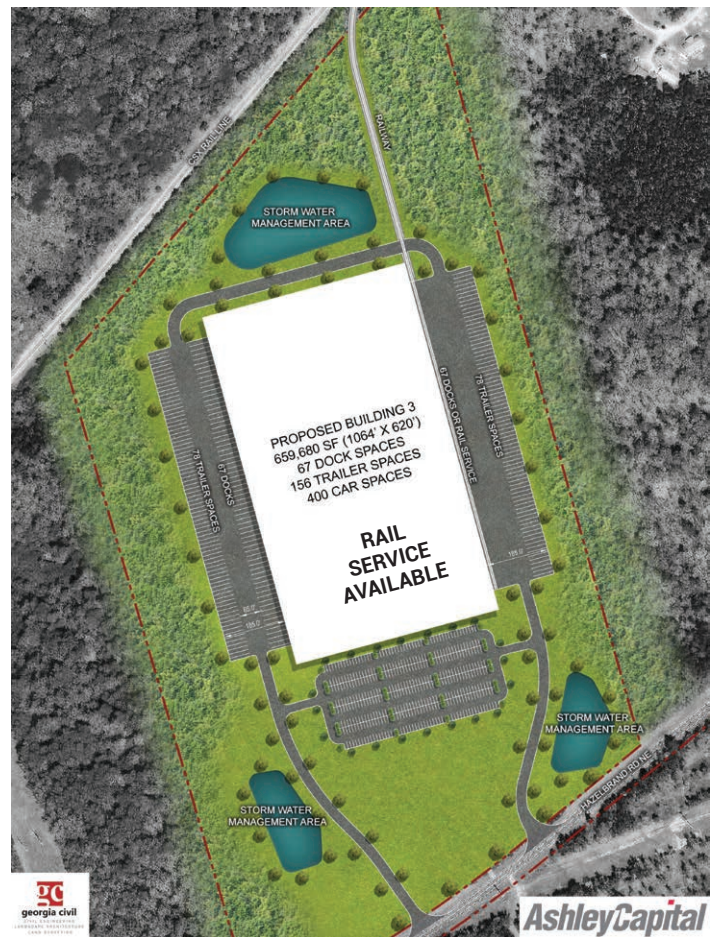


OPTION 'A'

Building 3 (Proposed)	Building 4 (Proposed)
302,400 SF	411,264 SF
1008' X 300'	952' X 432'
64 Dock Spaces	114 Dock Spaces
75 Trailer Spaces	132 Trailer Spaces
194 Car Spaces	170 Car Spaces

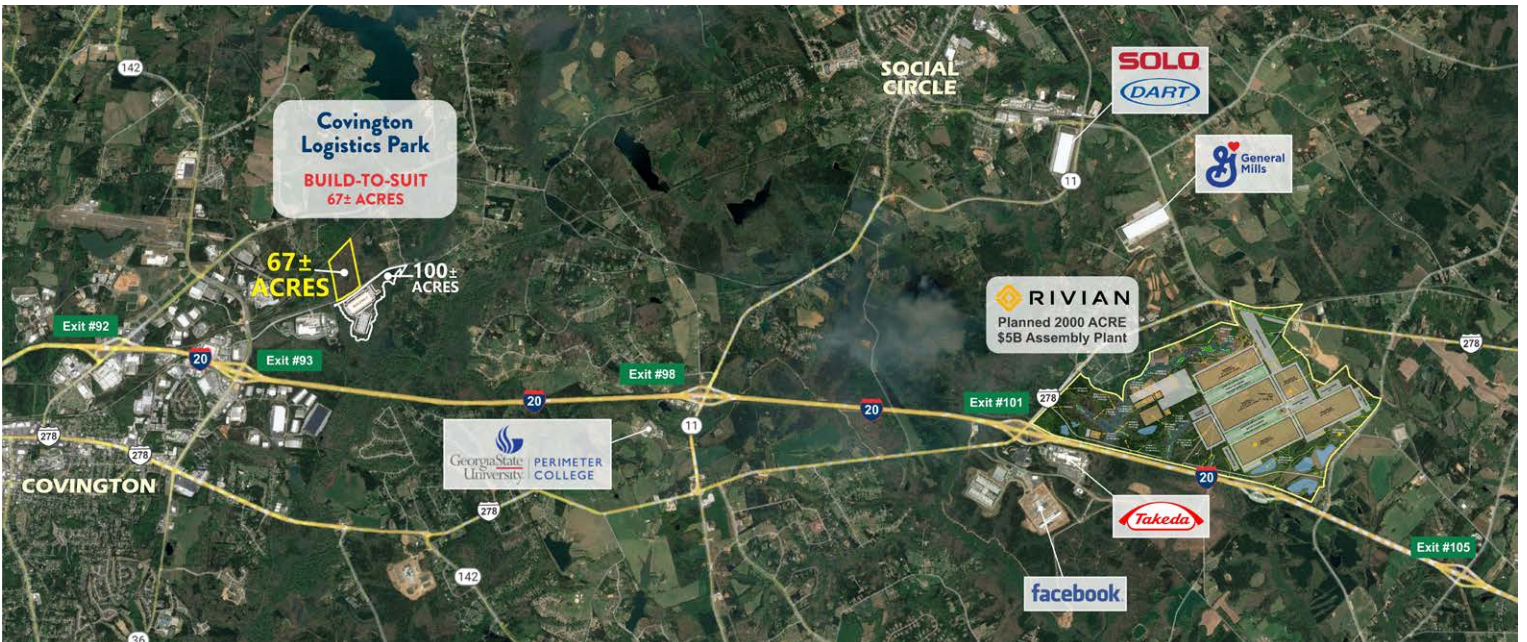
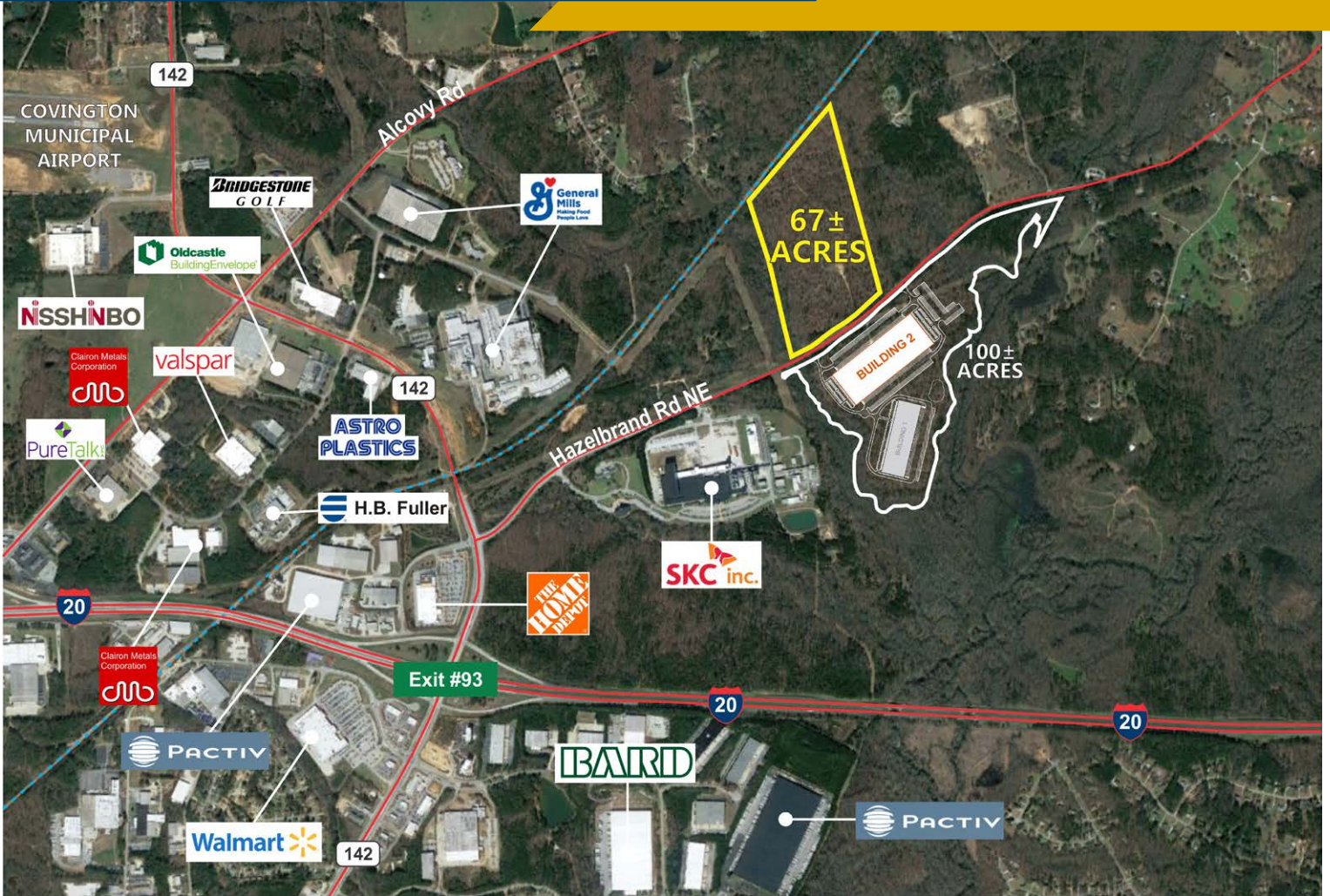
OPTION 'B'

Building 3 (Proposed)
659,680 SF
1064' X 620'
67 Dock Spaces w/ Rail
134 Dock Spaces w/o Rail
156 Trailer Spaces
400 Car Spaces



FOR MORE
INFORMATION
PLEASE CONTACT

BOBBY MAYSON
770.729.2817
bmayson@lavista.com



FOR MORE
INFORMATION
PLEASE CONTACT

BOBBY MAYSON
770.729.2817
bmayson@lavista.com