



### **FLEX BUILDING** **12,500± SF AVAILABLE**

16' - 22' Clear Height

Rear Load

Zoned ID - Industrial/Distribution  
(City of Conyers)

31 Automobile Parking Spaces

**Suite 200 - 2,500 SF**  
1 Dock-High Door

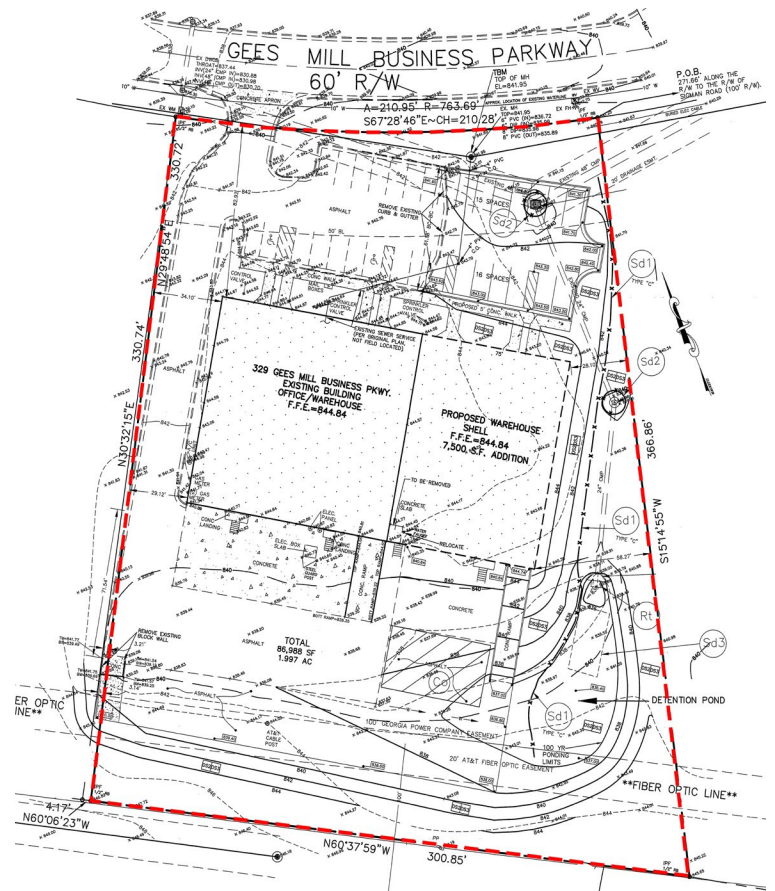
**Suite 100 - 2,500 SF**  
1 Dock-High Door  
1 Ramped Door

**Suite 80 - 7,500 SF**  
2 Dock-High Doors  
1 Ramped Door



FOR MORE  
INFORMATION  
PLEASE CONTACT

**BOBBY MAYSON**  
770.729.2817  
bmayson@lavista.com



FOR MORE  
INFORMATION  
PLEASE CONTACT

**BOBBY MAYSON**  
770.729.2817  
bmayson@lavista.com