



PROPERTY SIZE
11.91± Acres Total
4.16± Acres Usable



LOCATION
Quigg Branch Business Park



ZONING
ID - Industrial | City of Conyers



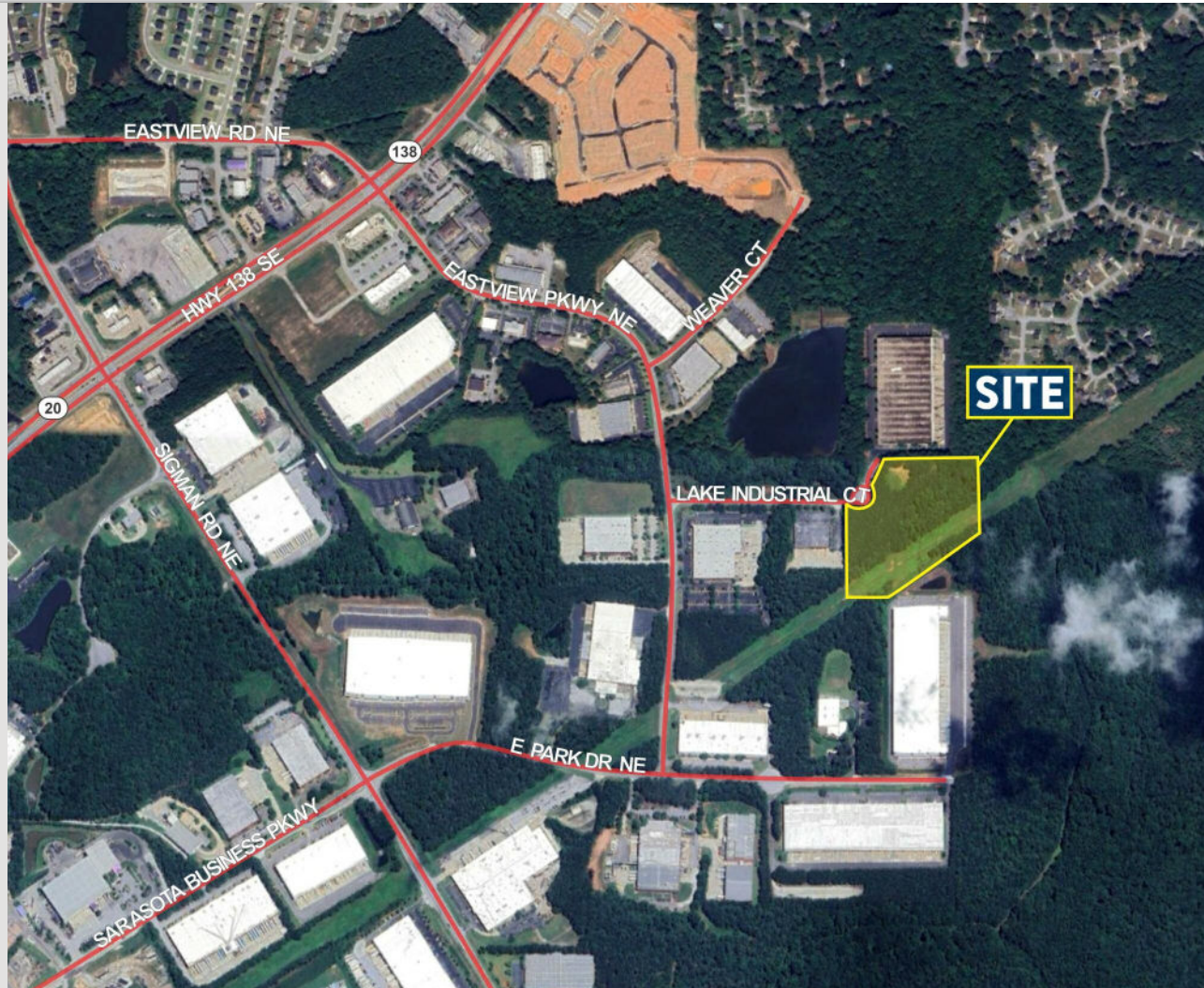
UTILITIES
All Utilities at the Site

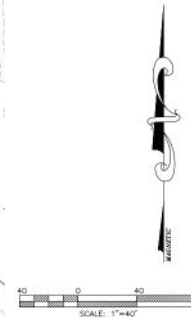
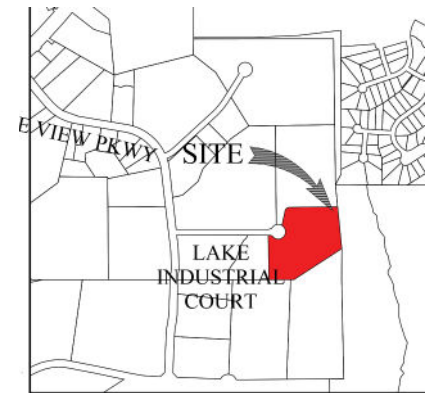
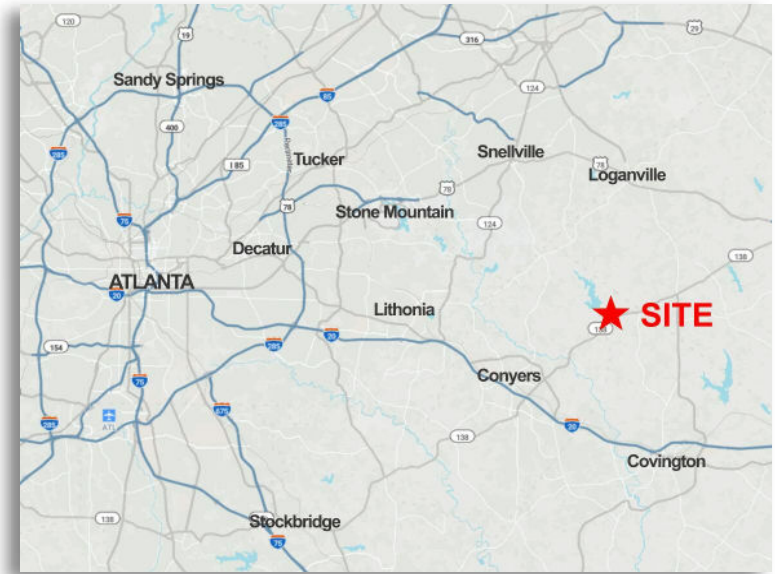
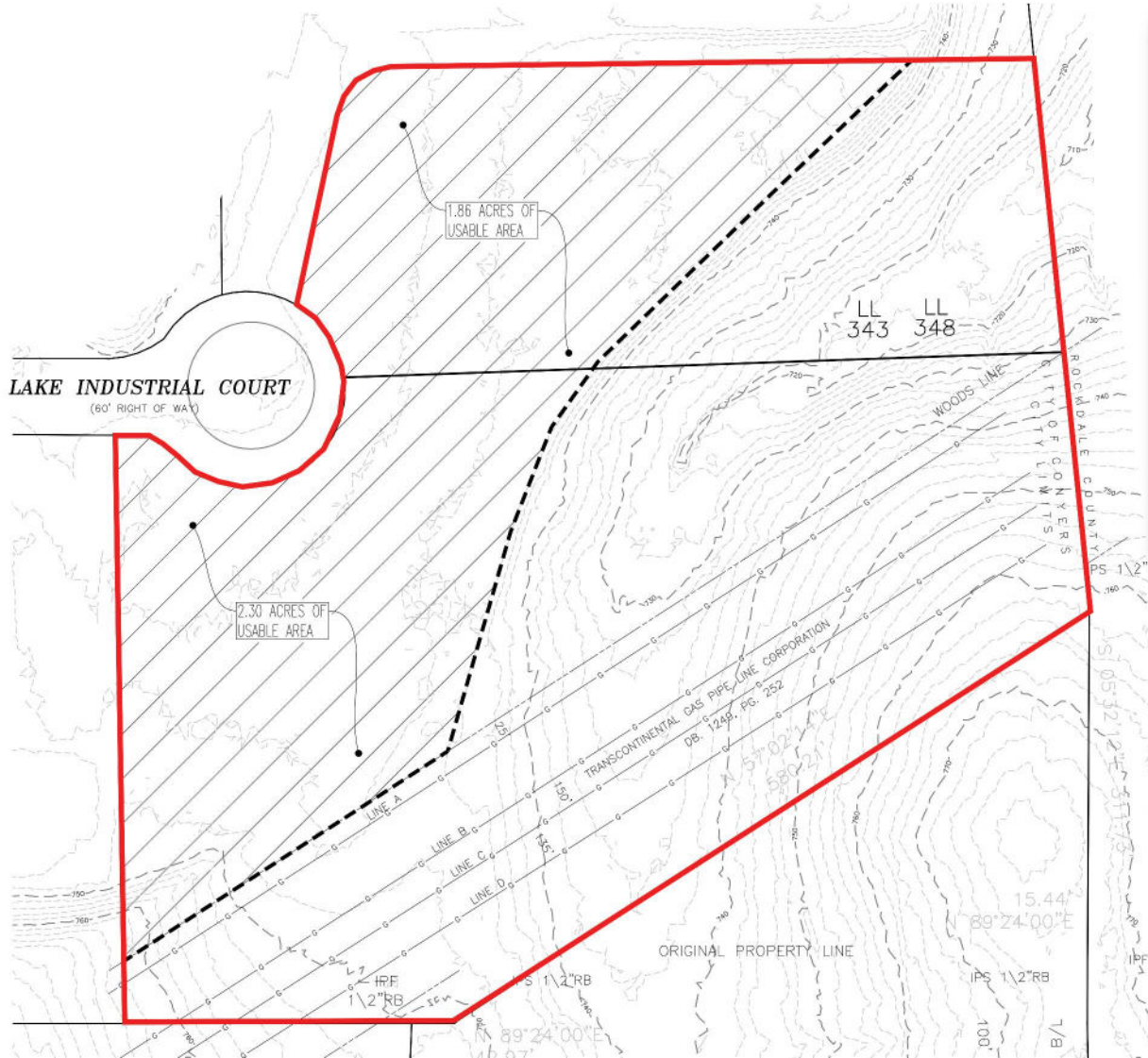


CONSTRUCTION STAGE
Site is Rough Graded



TRANSPORTATION
Easy Access to Interstate
2.4 miles to I-20





FOR MORE
INFORMATION
PLEASE CONTACT

BOBBY MAYSON
770.729.2817
bmayson@lavista.com

LAVISTA.COM