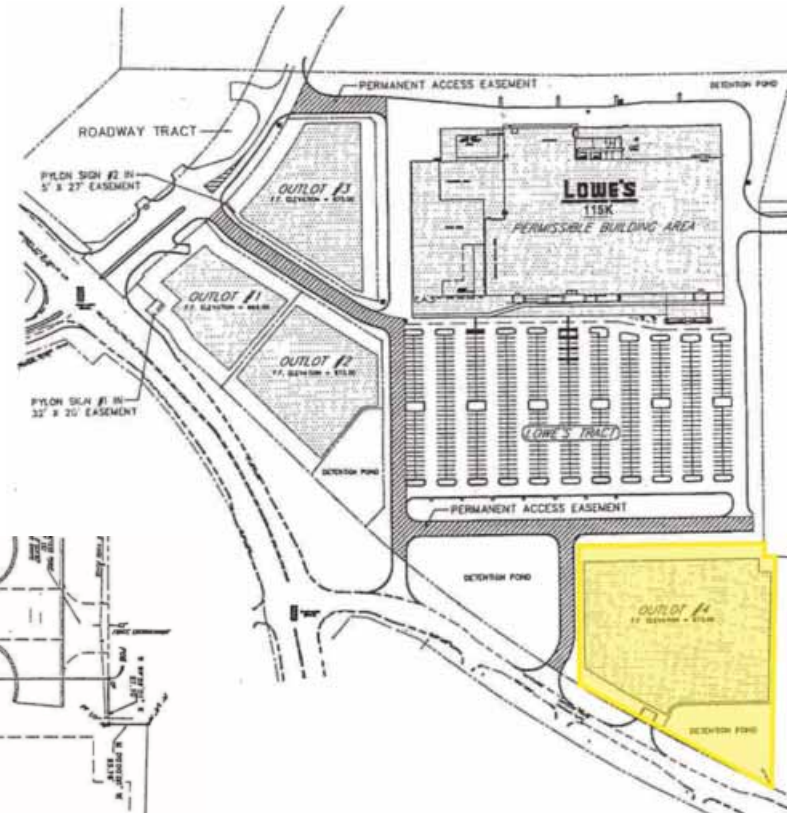
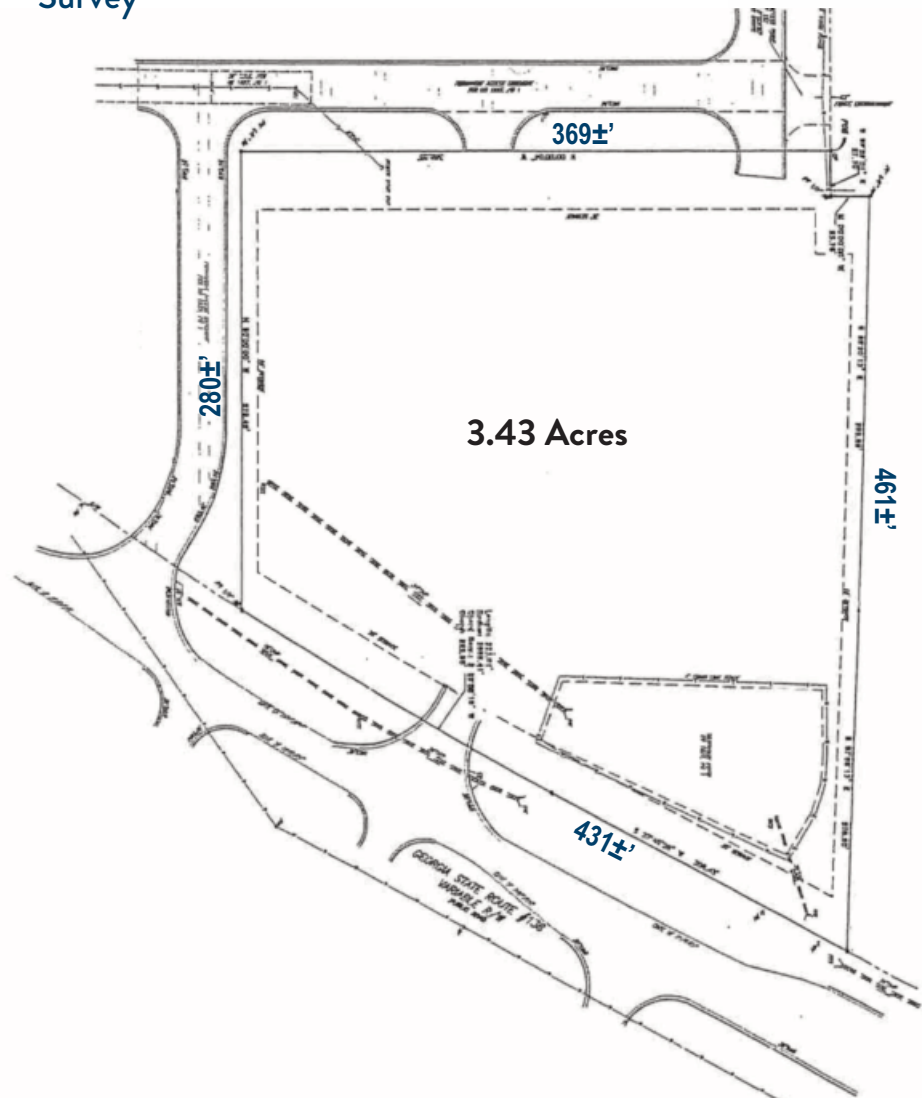


Project Site Plan



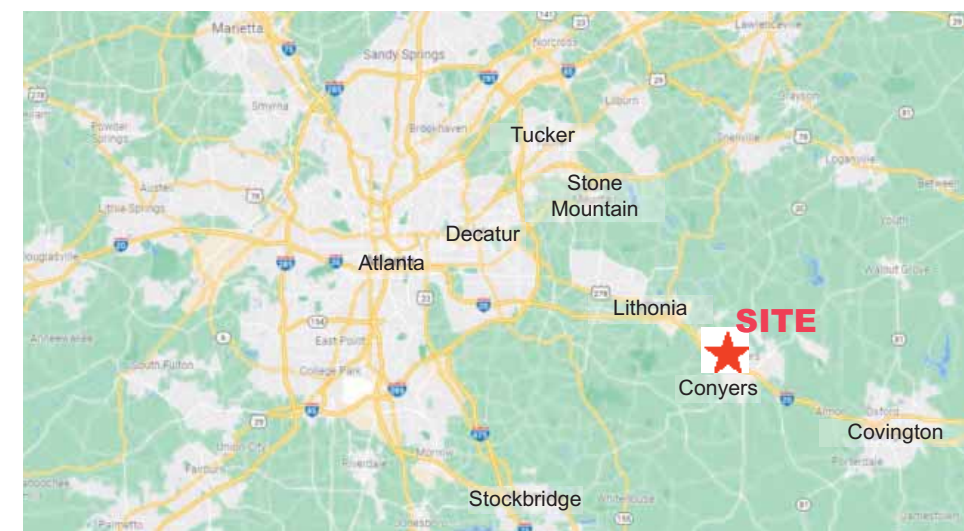
Survey



1892 Georgia Highway 138 SE | Conyers, Georgia 30013



1892 Georgia Highway 138 SE | Conyers, Georgia 30013



- 3.43 ± Acres - Graded
- Lowe's Outparcel
- Zoned C - 2
- Three (3) Existing Curb - Cuts
- Detention Pond on Site
- Water & Sewer at the Site
- Located in Area of Dense Commercial Development

FOR MORE INFORMATION PLEASE CONTACT

BOBBY MAYSON
770.729.2817
bmayson@lavista.com

WWW.LAVISTA.COM

