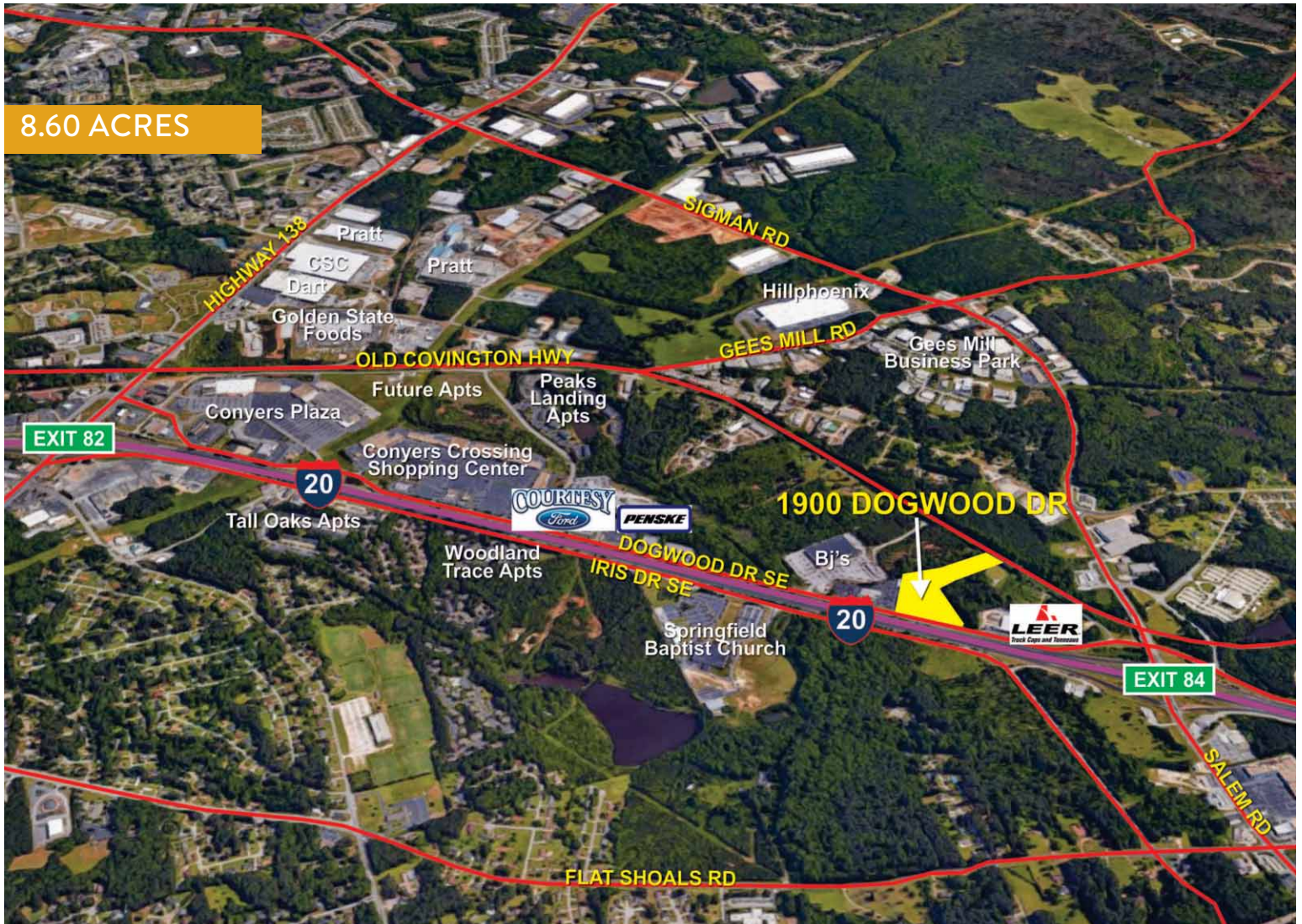


8.60 ACRES



1900 Dogwood Drive SE | Conyers, Georgia 30013

8.60 Acres

1/2 Mile to I-20 (Exit 84)

All Utilities Available
at the Site

Zoned Industrial

Excellent Topo

700' on Dogwood Drive
(I-20 Access Road)

Surrounded by Retail,
Commercial, and
Distribution Facilities

Great Visibility on I-20

FOR MORE
INFORMATION
PLEASE CONTACT

BOBBY MAYSON
770.729.2817
BMAyson@LAVISTA.COM

WWW.LAVISTA.COM

